

CERTIFICATE OF LOCATION OF GOVERNMENT CORNER

#2 MEANDER Corner of Section 19, Township 105 N, Range 41 W, 5th P.M.

STATE OF MINNESOTA, County of MURRAY

At the corner location shown on the sketch:

- On 5-21-96 found a 3/4" INSIDE DIAMETER x 17 1/2" IRON PIPE, UP 0.20'
DATE
REFERENCE MONUMENT TO MEANDER CORNER
 left monument as found, lowered monument, removed monument (explain)
- On 5-21-96 Placed a 3/4" x 24" REBAR WITH ALUMINUM CAP STAMPED
DATE
"DNR SURVEY MARKER", FLUSH

SKETCH OF REFERENCE TIES

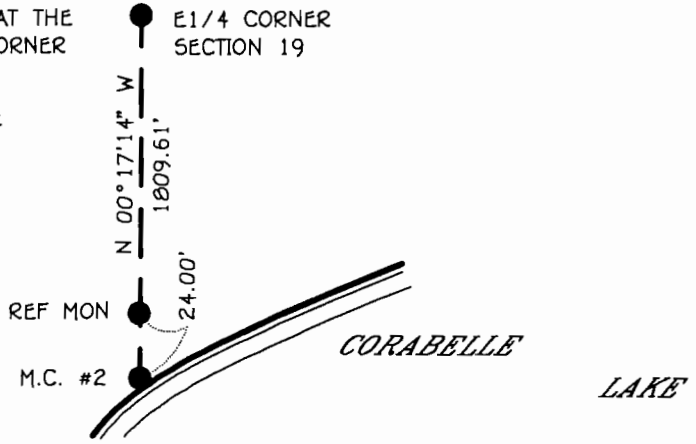


NOTE:
 REF MONUMENT IS
 3' EAST OF OLD DOWN N-S FENCE
 IN LINE WITH WITH FENCE NORTH

 SET STEEL FENCE POST 1' NORTH
 OF REF MONUMENT

 NO MONUMENT WAS SET AT THE
 LOCATION OF MEANDER CORNER

 GOOD TIES NOT AVAILABLE



1983 MURRAY COUNTY
 COORDINATE SYSTEM
 MEANDER CORNER #2
 N = 111612.841
 E = 490217.283

1983 MURRAY COUNTY
 COORDINATE SYSTEM
 REF TO MEANDER COR
 N = 111636.842
 E = 490217.166

BEARING IS IN COUNTY ORIENTATION

Statement of evidence relative to this corner location is on back of page.

JUL '96 JBM
 WMA00694.00.00.01

I hereby certify that this document and the data contained herein was prepared by me or under my direct supervision.

Bruce W. Shippard 7/12/96
SIGNATURE DATE

License Number 17003

Land Surveyor, Professional Engineer
 County Surveyor, County Engineer

OFFICE OF THE COUNTY RECORDER
 County of _____

I hereby certify that this document was filed in the Co. recorders office at _____ M. on the _____ day of _____ A.D., 19____

County Recorder Jamie Johnson
 By _____ JUL 16 1996, Deputy
 DOCUMENT NO. _____

Meander Corner Number 2 of Section 19, Township 105 North, Range 41 West

The DNR Bureau of Engineering contacted the following for survey information:

Minnesota Secretary of State's Office
Murray County Recorder's Office
Murray County Highway Engineer's Office
Madsen Land Surveying of Fairmont

- 1861 U.S. General Land Office notes obtained from the Secretary of State's Office show the corner marked with a wood post in a mound with trench and pits as per instructions.
- 1968 January, DNR Bureau of Engineering established a point on the east line of Section 19 northerly of the meander corner as follows:
- A) on the southerly projection of a line from the northeast corner of Section 19 thru the east quarter corner of Section 19
- An iron pipe was set to mark this location and was found to be:
- A) in line with a fence north
 - B) 3 feet east of a north-south fence
 - C) 1810.46 feet from the east quarter corner of Section 19
 - D) 51 feet north of the water's edge of Corabelle Lake
- 1996 May 21, DNR Bureau of Engineering found a 3/4 inch inside diameter by 17 1/2 inch long iron pipe, which was set in 1968 on the east line of Section 19. The iron pipe was found to be:
- 24 feet north of the water's edge of Corabelle Lake
 - 3 feet east of an old downed north-south fence
 - in line with a fence north
 - 1809.61 feet from the east quarter corner of Section 19
- Computed a position for the meander corner as follows:
- A) GLO proportional measurement from the east quarter corners of Section 19 and 30
 - B) on the southerly projection of a line from the east quarter corner of Section 19 thru the found iron pipe set in 1968
- The computed position for the meander corner was found to be:
- A) 1833.61 feet (1815.00' GLO) from the east quarter corner of Section 19
 - B) 3500.53 feet (3465.00' GLO) from the east quarter corner of Section 30
 - C) 1.27 feet east of the southerly projection of a line from the northeast corner of Section 19 thru the east quarter corner of Section 19
 - D) on the top of lake bank

Analysis of the above information led the DNR Bureau of Engineering to conclude that the computed position marks the location of corner. Was unable to set a monument at the meander corner because a large willow tree is very near to the computed position. Established a reference monument to the meander corner by replacing the found iron pipe, set in 1968, with a DNR Survey Marker.